



Expand your horizons
German High Quality Aluminium Door & Window Systems

SUNFLEX 

SF 20 Sliding System / All-Glass



The SUNFLEX all-glass sliding system SF 20 enables the individual parallel sliding panels to be moved horizontally to either one or both sides. On opening and closing the first sliding panel, the other sliding panels are automatically opened and closed by integrated followers. The floor-mounted construction means that wide openings can be achieved without additional roof supports. The lower ball-bearing mounted carriages ensure the optimum and smooth running of the individual sliding panels. Height compensation of the ceiling rail up to 20 mm and height adjustment of the rollers up to 5 mm allow the sliding system to compensate easily for structural sagging of the eaves or lintel and permit quick and simple installation.





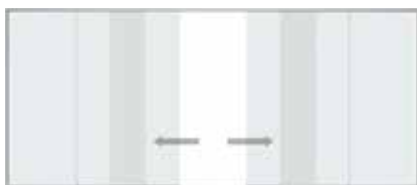
- ☐ floor-mounted sliding system
- ☐ sliding to the left or right as desired
- ☐ 15 mm panel construction depth
- ☐ with 3-, 5- or 7-track slide and guide rail
- ☐ follower function for sliding panel means system is easy to use
- ☐ floor rail with anti-slip coating can be integrated into the floor to provide an unobstructed living space
- ☐ internal or external locking of the sliding panels (optional)
- ☐ unpressurised drainage and easy cleaning due to optimum length of rails
- ☐ glazing with toughened safety glass
- ☐ panel structure of 8 or 10 mm
- ☐ powder coating

Kinds of handles

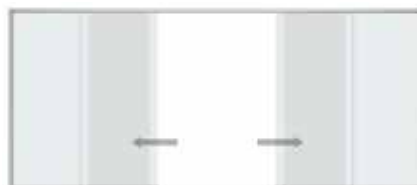


- ① Plastic knob, Ø 50 mm
- ② Stainless steel knob, Ø 50 mm
- ③ Recessed stainless steel mould, Ø 80 mm
- ④ Acryl glass handle, 70 x 15 x 10 mm
- ⑤ Stainless steel handle with lock
- ⑥ Stainless steel handle with lock and strike box

Handling



Unlock and slide the opening panel



Easy displacement of the elements by integrated followers



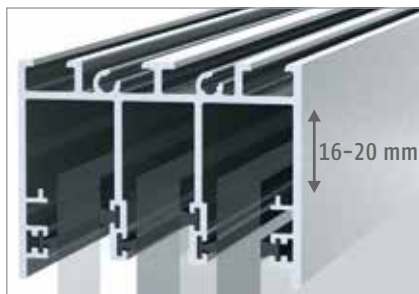
Large opening area with opened elements

Details



Sealing

Maximum transparency, permanent ventilation and protection against driving rain are ensured by a 25 mm covering of the panels when closed.



Height compensation

The ceiling rail adjusts to height differences from 16–20 mm in case of building subsidences at the upper construction.



Height adjustment

To compensate for structural variations the integrated rollers can be adjusted for height by up to 5 mm.



Vertical frame

Increased driving rain and wind resistance by vertical frame profiles with brush gaskets, available as option.



Drainage and cleaning

A sloping floor construction and optimally shortened rail lengths permit unpressurised drainage and simple cleaning of the floor rail. The anti-slip coating ensures that the floor rail surface is safe to walk on.



Barrier free living

Optionally a flat bottom rail (height = 13 mm) is available which is particularly suitable for indoor "barrier-free dwellings" in compliance with DIN 18025 – whether mounted or recessed into the floor.



Locking mechanism

Optionally an handle, a lock and a locking mechanism can be fitted to the panel internally and externally.



Convenience

On closing and opening the sliding door each adjacent panel respectively is automatically moved by the integrated followers.



Ease of operation

Smooth movement of the sliding panels by hidden rollers incorporating ball-bearings with noise-inhibiting contact surfaces.

SF 25 Slide and Turn System / All Glass or Aluminium Framed



SUNFLEX slide and turn systems enhance the attractiveness of any home through the contrast of glass and wall. Their individually moveable, unconnected glass panels can be opened over the entire frontage and parked as a narrow stack on the side so that an impediment-free passage from inside to outside is ensured and visual appearance is not impaired. The opened panels require very little space.



SF 25 all-glass system



SF 25 aluminium framed system





- ☐ low-wear and maintenance-free fittings
- ☐ different bottom tracks
- ☐ pressure-free drainage of bottom track by inclined floor construction
- ☐ catch channel at the inside of the bottom track to drain condensation and cleaning waters
- ☐ top-hung construction with a choice of flush or weather-proof bottom track options
- ☐ horizontal running mechanism with triple stainless steel ball bearings and carbon fibre-reinforced polyamide wheels
- ☐ inwards or outwards opening of the panels
- ☐ choice of panel partition and sliding direction
- ☐ height compensation of up to 22 mm (+/-11 mm)
- ☐ double brush seal with plastic bridge at top and bottom of the glass panels
- ☐ airborne sound insulation up to Rw 34 dB according to DIN EN ISO 140-3
- ☐ glass thickness of 8 and 10 mm depending on static requirements
- ☐ screwed glazing for effortless future replacement of glass



Handling



Simple opening by operation of a turn knob

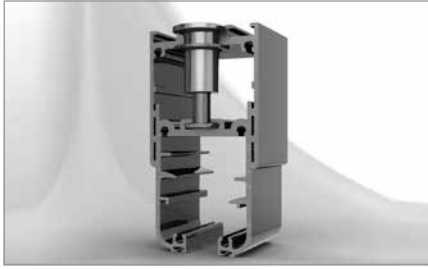


Easy sliding and turning of the individual elements



Large opening space when elements are opened

Details



Height compensation

- ☐ height compensation profile allows a height adjustment of up to 22 mm



Top track with vertical flange

- ☐ height compensation profile with vertical flange



Top track with horizontal flange

- ☐ height compensation profile with horizontal flange
- ☐ screw cap with cover clip



Handle

- ☐ Turn knob (SF25, SF30)



Glass

- ☐ screwed glazing, glass thickness 6, 8 or 10 mm possible



Bendings

- ☐ corner angle continuously adjustable for upper rail and height compensation profile



Carriage system

- ☐ completely stainless steel carriage system



Covering flap

- ☐ carriage recess with covering flap



Panel guidance

- ☐ optimal panel guidance when opening and closing

SF 42 Sliding System / Aluminium Framed



Sliding system is specifically designed for large size glass panels for rooftop terraces and winter gardens that are subject to stringent sealing and security requirements.

The SF 42 sliding door allows the individual sliding panels to be moved horizontally to one side or both in parallel. The individual sliding panels glide smoothly on ball-bearing mounted carriages for optimum performance.

Systeminformation



- ☐ non insulated aluminium system
- ☐ floor-mounted sliding system
- ☐ sliding to the left or right as desired
- ☐ narrow exterior views: Frame 50 mm, casement 40 mm, frame bar 70 mm
- ☐ opening types: 2- or 3-track with up to 6 moving casements
- ☐ max. door casement height: 3,600 mm
- ☐ max. casement weight: 180 kg
- ☐ construction depth: 2-track 65/40 mm, 3-track 115/40 mm
- ☐ glazing thickness of 6–10 mm, 20 mm and 24 mm possible



Handling



Unlock and slide the opening panel



Easy displacement of the elements by integrated followers



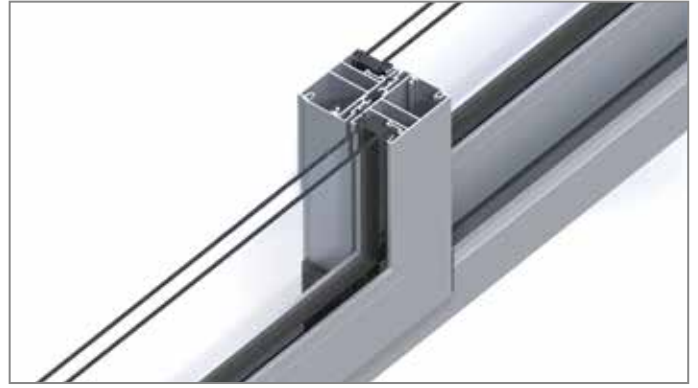
Large opening area with opened elements

Details



Frame

- non-insulated aluminium sliding system



Vertical Frame

- Increased water- and wind tightness by three sealing levels within the labyrinth area



Design

- narrow exterior views of all profiles provide for homogenous optics



Handles

1. Locking interior
2. Locking interior with lock
3. Pull handle exterior

SF 45 Folding System / Aluminium Framed



The SUNFLEX folding sliding system SF 45 can offer large-scale glazing which open and close comfortable by meaning of the interconnected panels - a transparent all-rounder with the guarantee of quality and longevity.



- flush aluminium construction
- perfectly matched components
- low construction depths and slim profile designs
- choice of inwards or outwards opening folding panels
- panel distribution and folding direction of panels freely selectable
- storm-proof and burglar-resistant metal fittings
- height of element up to 4400 mm
- various glazing types, lock types, colours, finishes, etc.



Details



Non insulated aluminium system



Lockings

- ☐ different kinds of lockings available



Handles

- ☐ proper SUNFLEX handle series



Panel catcher

- ☐ panel catcher for additional security to fix the pass door to the adjacent panel



Adjustment

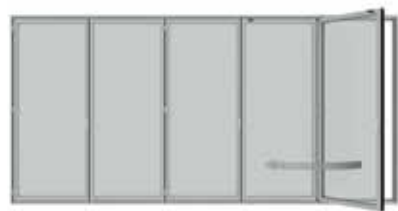
- ☐ assembly shoes allow a fast assembly and precise adjustment of the vertical frame profiles



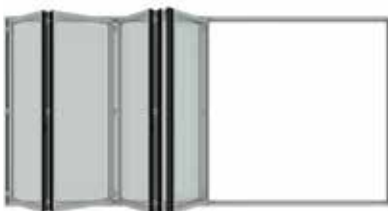
Fitting

- ☐ burglar resistance fittings

Handling



Easy opening of the first panel



Folding of the connected elements



Parking of the folded panels



An awning window is appropriate for many architectural styles with an intriguing appearance when grouped with other window types. It is hinged at the top and opens outwards from the bottom in an upwards swing.

A casement window is the perfect complement to the simplicity of modern design, while also providing maximum ventilation. This type of window is hinged on either side so the sash opens outwards, to the right or left, in a swinging motion.

Glass Balustrade



SUNFLEX frameless glass balustrades maximise the perception of space through a modern minimalist appearance, retaining views while providing security and safety for staircases, balconies and decks. Our systems provide an enduring architectural feature that will enhance and add value to your home.

- glass thickness 12 mm
- glass height up to 1.400 mm
- glass width up to 2.400 mm
- for privat and commercial projects
- for floors and stairs
- for indoor and outdoor use



Overview of available colours



White
21880



INFINITY WHITE #
KL1002525



P90098AN



P90042AQ



Snow Cream
21800



Milk Cream
21089



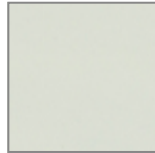
P90025AN



P70315AN



TITANIUM SILVER #
KL1002835



P70003AQ



Munich Grey
21080



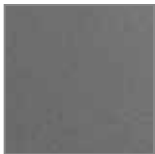
P90097BN



AZTEC GREY
KL1002822



ZAGROS
KL1018387



SILVER SAHARA
METALLIC
KL1026002



SILVER SPARKLE
METALLIC
KL 1016937



P70160BQ



P90079WQ



Champagne
KL188



Warm Grey
21087



NUT BROWN
KL1016116



BROWN
KL1018489



P70441BQ



P70369XN



Dark Brown
KL1006805



Dark Grey
KL1023773



Eagle Black
21081



Ebony Black
KL1002823



MONKEY POD
9103 402



GOLDEN TEAK
9061 402



BROWN TEAK
9061 403



RED TEAK
9061 406



MAKHA WOOD
9154 403

All shown colours are samples and could be look different in original

SUNFLEX Asia Ltd.

Samui Office | 52/12 Moo 3, T. Bophut, A. Koh Samui | Suratthani 84320 Thailand
Tel.: +66 (0) 77 414 412 | Fax: +66 (0) 77 414 413

Phuket Office | Wana Park, 177/97 Moo 4, T.Srisoonthorn, A. Thalang | Phuket 83110 Thailand
Tel.: +66 (0) 76 684 966 | Fax +66 (0) 76 684 966

www.sunflexasia.com | info@sunflexasia.com